

WELCOME HOME!

As we kick off the 2018-2019 school year, the College of Social and Behavioral Science has a new place to call home: The Carolyn and Kem Gardner Commons! [READ MORE ABOUT CKGC!](#)

FACES OF CSBS



Student Spotlight

Meet Tamara Calzado-Real, a first-generation junior majoring in economics and minoring in business. She serves as President of ALPFA (Association of Latino Professionals for America) which promotes professional development among the Latinx community on campus. [READ MORE](#)



Alumni Spotlight

Meet Jennifer Yim, director of the Judicial Performance Evaluation Commission (JPEC) and political science alumna, who received the American Political Science Association's 2018 Leonard D. White Award!

FEATURED NEWS

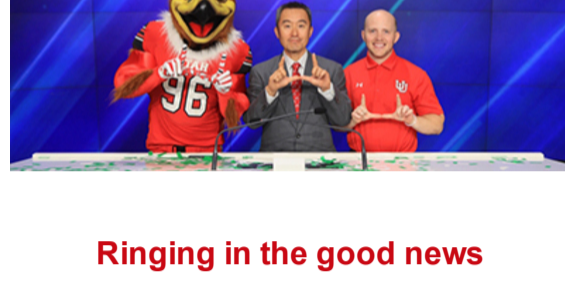
To view our news archive, [click here](#)



The U's new secure data center

Fronted under CSBS, the new Wasatch Housed Research Data Center will provide qualified researchers throughout the Intermountain West with access to a wide range of extensive restricted-use data collected by federal and state agencies.

[READ MORE](#)



Ringing in the good news

Swooper and the Department of Family and Consumer Studies celebrated a new grant in style. Professor Zhou Yu, director of the department's Financial Planning Program, accepted a \$50,000 NextGen RIA grant from TD Ameritrade Institutional.

[READ MORE](#)



Center names interim director

[Erika George](#), Samuel D. Thurman professor of law, will serve as the interim director of the Tanner Center for Human Rights during the 2018-2019 academic year.

[READ MORE](#)



Campfires still beckon, even when they're not allowed

"There seems to be something about the darkness that is like a blanket that ties people together," said anthropology professor Polly Wiessner.

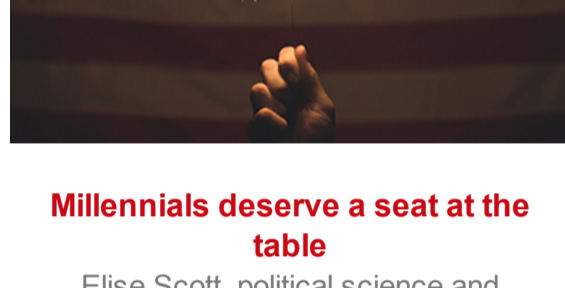
[READ MORE](#)



Study finds failure to follow health care protocol

Health care workers may be contaminating themselves and their work environments by neglecting to use personal protective equipment and follow preventive protocol, according to a study from researchers at the University of Utah and the University of Michigan.

[READ MORE](#)



Millennials deserve a seat at the table

Elise Scott, political science and communications double major, advocates for lowering the age limit to run for office. She includes thoughts from Christian Mower, also majoring in political science, who believes if you are old enough to vote, you are old enough to run.

[READ MORE](#)

CALENDAR OF EVENTS

AUGUST

GARDNER COMMONS SCAVENGER HUNT

AUGUST 22, 2018 | 1-3 PM | GARDNER COMMONS

[GET DETAILS](#)

NEVER AGAIN IS NOW:

Remembering and Reaffirming our Collective Commitment to Protecting Civil Rights

AUGUST 30, 2018 | 6:00 PM | UTAH MUSEUM OF FINE ARTS

[GET DETAILS](#)

SEPTEMBER

**AMERICAN DREAM DIALOGUE SERIES:
Dialogue #1: What is happening to the American Dream?**

SEPTEMBER 10, 2018 | 12-1:30 PM | GARDNER COMMONS

[GET DETAILS](#)

**THE GREAT POLARIZATION:
Economics, Institutions and Policies in the age of Inequality**

SEPTEMBER 27-29, 2018 | GARDNER COMMONS

[GET DETAILS](#)

AWARDS & KUDOS



Psychology graduate student Lace Padilla received a NASA Rapid Response award for a team project titled, "Connecting Earth Observations to Decision Makers for Preparedness Action".



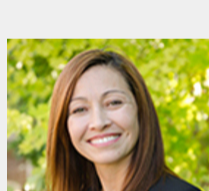
Geography professor Dennis Wei was awarded a grant from the National Institute for Transportation and Communities (NITC) on "Reducing vehicle miles traveled (VMT), Encouraging Walk and Bike Trips, and Facilitating Efficient Trip Chains through Polycentric Development".



Ken Smith, professor of Family and Consumer Studies and director of the Utah Population Database) received a grant from the NSF on "Causal Effects of Grandparents on Grandchildren's Sociodemographic Outcomes". It is a collaboration with an interdisciplinary team from University of Pennsylvania's Population Studies Center.



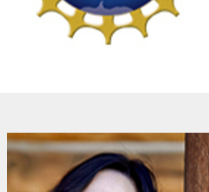
Psychology assistant professor Trafton Drew recently earned an R01 grant from the National Institutes of Health/National Cancer Institute. Trafton is collaborating with investigators at UCLA on the project "Reader Accuracy in Pathology Interpretation and Diagnosis: Perception and Cognition (RAPID-PC)".



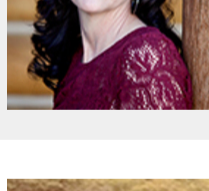
AnnaBelle Bryan won the 2018 Academic and Student Affairs District Staff Excellence Award for her outstanding work as director of operations for the National Center for Veterans Studies.



Congratulations to Dr. Tyler Faith, assistant professor of anthropology and Dr. Mitch Power associate professor of geography for receiving a NSF CNH grant for their proposal titled, "Exploring the history of coupled climatic and human influences on ecosystem changes during the last one million years."



The Gerontological Society of America (GSA) has named Sonia Salari, associate professor of family and consumer studies, as one of its 2018 fellows. Salari joins 88 others who have been selected by the nation's largest interdisciplinary organization devoted to the field of aging.



Psychology graduate student Lauren Williams received an NSF GROW (Graduate Research Opportunities Worldwide) Fellowship. The Fellowship will support her work on "Characterizing in Volumetric Medical Images" in collaboration with Dr. Anina Rich of Macquarie University in Sydney, Australia.



Lisbeth Louderback, anthropology assistant professor and curator of archaeology at the Natural History Museum of Utah, recently received an NSF grant for her research on "Detecting the Early Stages of Domestication of a Native Potato in Western North America."

SPECIAL ANNOUNCEMENTS

Family and consumer studies merges majors

Beginning fall 2018, the *consumer & community studies* and *human development & family studies* majors will merge into one major: *family, community, and human development*. [READ MORE](#)

Earn a bachelor's degree in geographic information science (GIS)

Whether it is helping companies find where they should put their new franchise location or tracking the spread of diseases, students with experience in GIS are in high demand. [READ MORE](#)

Sociology develops new criminology major

With this new major, students will have the opportunity to understand the causes, extent and consequences of crime, criminal behavior and the criminal justice system. [READ MORE](#)

Now offering: Quantitative analysis certificate

In an increasingly data-driven world, many sectors of the job market are seeking people with basic quantitative skills. Now thanks to this certificate, students can develop their data analytic skills in an interdisciplinary social science context. [READ MORE](#)

FORWARD TO A FRIEND